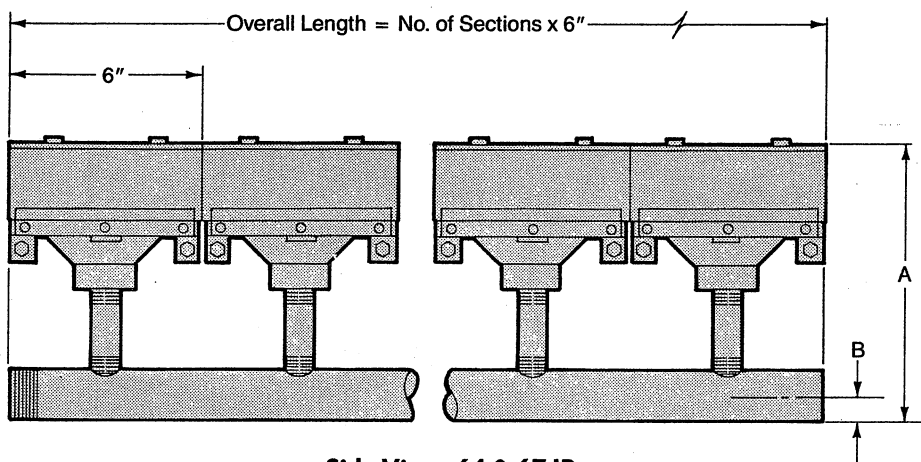
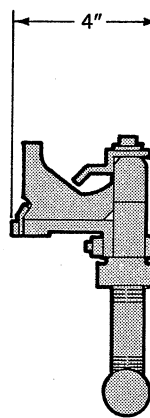


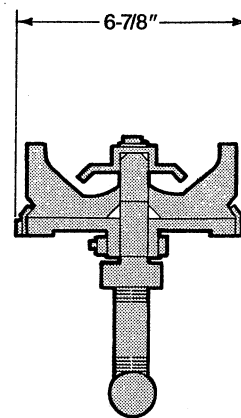
DIMENSIONS 100 SERIES IR



Side View, 64 & 67 IR



**End View
64 IR**



**End View
67 IR**

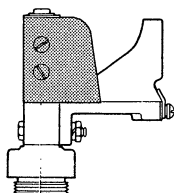
Pipe Size	Maximum Number of Sections		Dimensions In Inches		Weight Per Section, Lbs.	
	64 IR	67 IR	A	B	64 IR	67 IR
1-1/2	10	5	7-5/8	15/16	8	12
2	20	12	9	1-3/16	9	12-1/2
2-1/2	22	14	9-5/8	1-7/16	10-1/2	13-1/2
3	40	26	10-3/16	1-3/4	11-1/2	14-1/2
4	82	42	11-3/16	2-1/4	13	16
6	100	90	13-3/8	3-5/16	17	20

Manifold is schedule 40 pipe.
Contact factory for lengths over 252".
Inlet may be placed at end (standard), bottom, or side of manifold.

100 SERIES ACCESSORIES

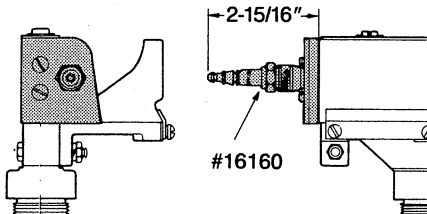
64 IR

Plain End Plate



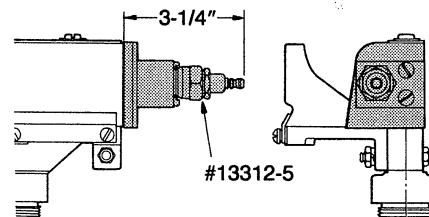
Assy. No. 113002

Ignition End Plate w/Spark Plug



Assy. No. 113004

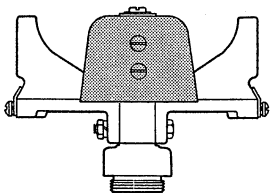
Flame Rod End Plate w/Flame Rod



Assy. No. 113007

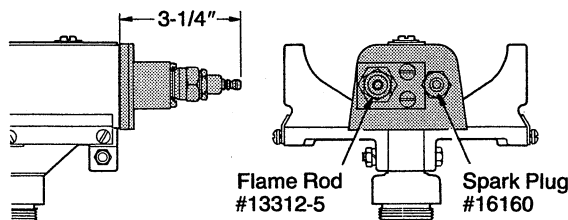
67 IR

Plain End Plate



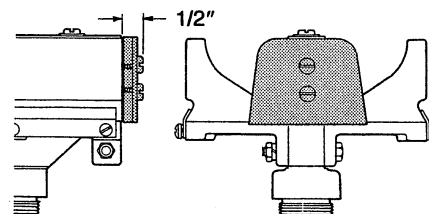
Assy. No. 113009

Ignition & Flame Rod End Plate w/Spark Plug & Flame Rod



Assy. No. 113013

Flame Turn-Around End Plate



Assy. No. 113012