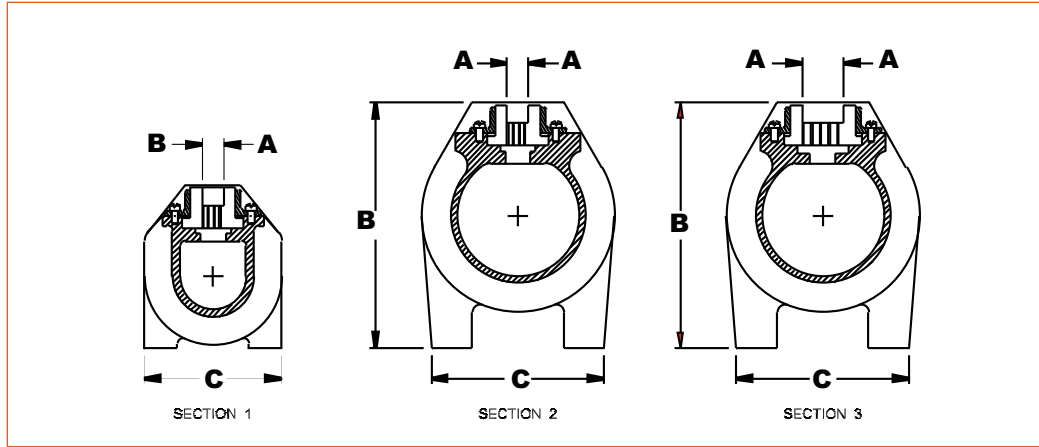


Selection Data



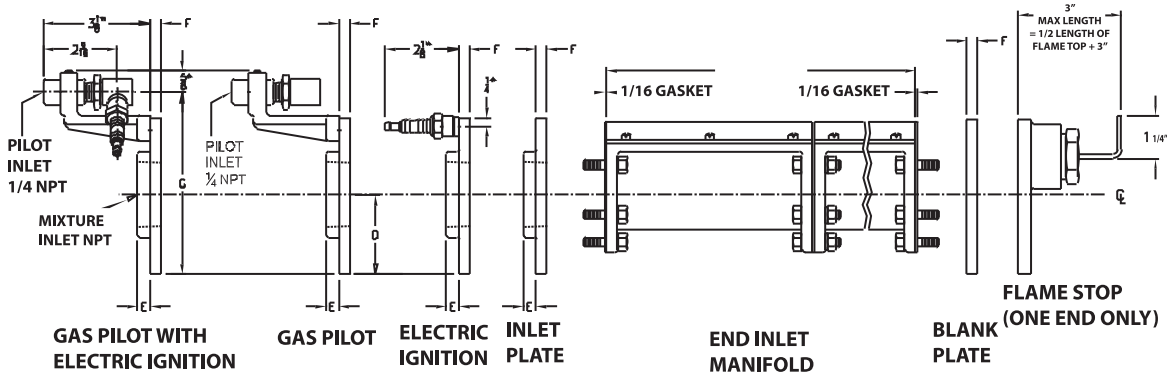
Schedule 1 - Series Selection and Data

Series No.	Sect. No.	Port		Port Area Per Inch of Length Sq. In.	Mainfold Mixture Inlet Size N.P.T	Flame, In.			Dimensions, Inch							
		No.	Size, In.			Length	Width "A"	B	C	D	E	F	G	H		
															Min.	Max.
RB	822A	2	8	1/32 X 1/32	.0625	1 1/2	6	30	1 7/32	4 9/16	3 3/8	2 5/16	3/8	5/16	5 3/8	4
RB	822B	3	8	1/32 X 1/32	.0625	3	36	72	1 7/32	6	4 3/4	3 1/4	1 1/4	3/8	6 13/16	5 3/4
RB	823A	2	8	1/32 X 3/64	.0937	1 1/2	6	24	1 7/32	4 9/16	3 3/8	2 5/16	3/8	3/8	5 3/8	4
RB	823B	3	8	1/32 X 3/64	.0937	3	30	72	1 7/32	6	4 3/4	3 1/4	1 1/4	3/8	6 13/16	5 3/4
RB	833A	2	8	3/64 X 3/64	.1406	1 1/2	6	12	1 7/32	4 9/16	3 3/8	2 5/16	3/8	7/16	5 3/8	4
RB	833B	3	8	3/64 X 3/64	.1406	3	18	72	1 7/32	6	4 3/4	3 1/4	1 1/4	3/8	6 13/16	5 3/4
RB	1022B	4	10	1/32 X 1/32	.0783	3	6	72	1	6	4 3/4	3 1/4	1 1/4	3/8	6 13/16	5 3/4
RB	1024B	4	10	1/32 X 1/16	.1565	3	6	72	1	6	4 3/4	3 1/4	1 1/4	3/8	6 13/16	5 3/4
RB	1034B	4	10	3/64 X 1/16	.2357	3	6	72	1	6	4 3/4	3 1/4	1 1/4	3/8	6 13/16	5 3/4

Schedule 2 - Special Feature Combinations

Special Feature Type	End Inlet	Bottom Inlet	Electric Ignition	Gas Pilot	Gas Pilot with Electric Ignition	Flame Stop	
						One End	Both Ends
A	•						
B		•					
C	•					•	
D		•				•	
E	•		•				
F		•	•				
G	•			•			
H		•		•			
I	•				•		
J		•			•		
K	•		•			•	
L		•	•			•	
M	•			•		•	
N		•		•		•	
O	•				•	•	
P		•			•	•	
R		•					•

End Inlet Series Feature Combinations



How to specify catalog number...

1. Specify Series Number (Schedule 1), based on burner requirements as to flame width, length and heat capacity, etc.
2. As prefix to Series Number, indicate special feature type (A, B, C, etc.) from Schedule 2.
3. As suffix to Series Number, list flame length (Schedule 1).
4. Example: A series 822B Ribbon Burner, with end inlet and electric ignition (Special Feature Type E) and 48 in. flame length – has the following number (RB indicates Ribbon Burner)
RB E 822B 48 or RB-E-822B-48

Notes: Standard flame lengths are in increments of 6 in.
 Maximum and minimum flame lengths are listed in Schedule 1.
 Flame stops are supplied in increments of 3 in., up to 50% of flame length.
 End-inlet burners can have only one flame stop; bottom-inlet burners can employ one or two.
 Bottom-inlet burners, with flame length up to 24 in., have inlet in center; bottom inlet burners, with flame length over 24 in. have inlet 12 in. from one end of flame.

Bottom Inlet Series Feature Combinations

