

JOB QUANTITY

BILL OF MATERIAL
UNIT QUANTITY

MARK	REQ'D	DESCRIPTION OR PART NUMBER	SL DS
------	-------	----------------------------	----------

AUTOMATIC FIRE CHECKS

INSTRUCTIONS FOR CONVERTING AF-SERIES (WITHOUT MICRO-SWITCH) TO AFS OR AFSE-SERIES (WITH MICRO-SWITCH).

NOTE: Existing series AF automatic firecheck must be in the closed position before attempting to mount micro switch. Do not mount a micro switch to a firecheck that is on stream.

A- Remove socket head capscrews, washer, test disc and test-set disc (index nos. 3, 4, 5 and 6) from existing firecheck.

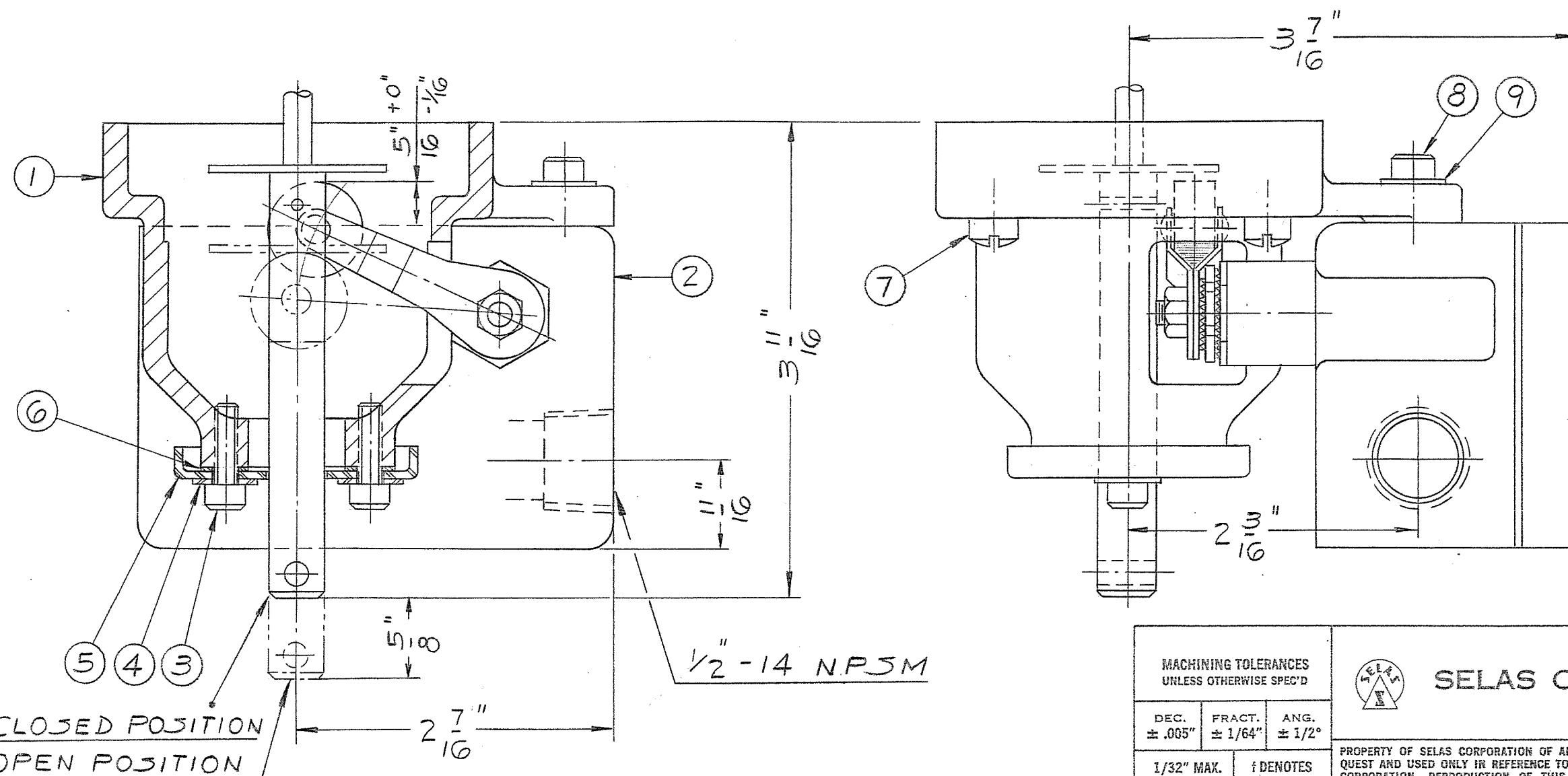
B- Remove four fillister head capscrews (index no. 7) and remove old cap casting. Mount new cap casting (index no. 1). Cap casting can be rotated in 90° increments to suit individual installation.

C- Loosen the roller lever on micro switch (index no. 2) by holding the hexagon washer with a wrench and loosen the lock nut to disengage the serrations. Adjust roller lever on switch so that top of roller wheel is $5/16" \pm 1/16"$ above switch mounting surface. Retighten lock nut.

D- Mount switch to new cap casting with the two socket head capscrews and lockwashers (index no. 8 & 9). Roller wheel must be free to spin after switch has been mounted.

E- Reassemble index nos. 3, 4, 5 & 6 & make necessary wiring connections by removing switch front plate.

F- Reset (open) firecheck and check to see that test disc (index no. 6) indicates SET position. Disassemble & rotate test disc if necessary.



MACHINING TOLERANCES UNLESS OTHERWISE SPEC'D			CONFIDENTIAL PROPERTY OF SELAS CORPORATION OF AMERICA DRESHER, PENNSYLVANIA		
DEC. ± .005"	FRACT. ± 1/64"	ANG. ± 1/2°	PROPERTY OF SELAS CORPORATION OF AMERICA. TO BE RETURNED UPON REQUEST AND USED ONLY IN REFERENCE TO CONTRACTS OR PROPOSALS OF THIS CORPORATION. REPRODUCTION OF THIS PRINT OR UNAUTHORIZED USE OF PATENTED OR PATENTABLE FEATURES DISCLOSED HEREON IS PROHIBITED.		
1/32" MAX. TOOL RAD.	† DENOTES RMS VALUE		DATE 8-12-70		
TITLE INSTRUCTIONS FOR MOUNTING MICRO SWITCH TO CAT. AF-SERIES AUTOMATIC FIRECHECKS			DWN. BY H. J. J.		
			SCALE 12" = 1'-0"		
			REV. 0		
			DWG. NO. B-118705		

NO.	REVISION	BY	DATE	S. O.	NEXT ASSEMBLY	CODE