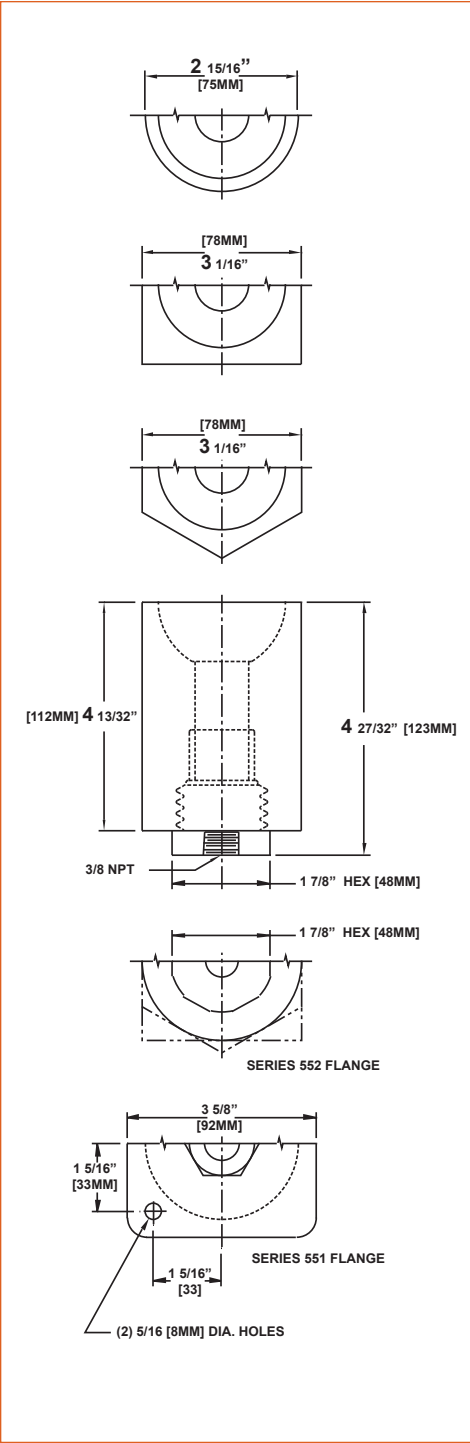


Threaded (semi-furnace)



Designed for mounting into vertical refractory walls or panels where 4.5" (114mm) thick wall construction is acceptable, input capacity of the Series 51 tip is adequate, and work temperatures generally do not exceed 1600° to 1800°F (870° to 980°C). All critical metallic parts are fabricated of heat resistant alloy steel.

Each burner block is threaded to receive the hub of the cast iron burner body. Two series of burners are available: (1) Series 551, with flanges which overhang the burner blocks for bolting to steel casings or frameworks; (2) Series 552, with flanges small enough to permit close nesting of burners.

Unit Burner Data		
Large Flange Series 551	Shape of Burner Block	Catalog Number
		Mixed Nat., Propane & Butane Tip No. 51
Small Flange Series 552	Round	KZ551-RN3
	Square	KZ552-SN3
	Round	KZ552-RN3
	Hexagonal	KZ552-HN3
Burner data given is for high-temperature blocks. Data for regular blocks is identical except for the omission of the designation "Z" in catalog numbers.		