

BALANCED ZERO GOVERNORS

Electric Gas-Lok

MODEL: 5103-GLE

Revision: 0

BULLETIN
5103

DESCRIPTION

The Gas-Lok is a modification of the Zero Governor enabling its use as both a precision balanced regulator and operating shut-off valve.

The Gas-Lok is shipped ready to install, assembled as shown in Figure 1. The impulse hole (A) is closed at the factory. Port #1 of the three-way solenoid valve connects to the outlet end of the valve body. Port #2 is connected on the job to the main gas line ahead of all automatic control valves. Tubing is supplied for this connection. Port #3 connects to the lower diaphragm chamber

of the Zero Governor.

The Gas-Lok operates as a true Zero Governor when the solenoid is energized, opening Port #1 and Port #3. This allows the outlet pressure to be referred to the main diaphragm chamber (B). When the electric circuit is broken by a control device, the Gas-Lok operates as a cut-off valve. Port #1 closes and Port #2 opens. This allows gas flow from the line to the lower diaphragm chamber. The resulting increase in pressure under the main diaphragm (B) holds the valve tightly shut.

DIMENSIONS

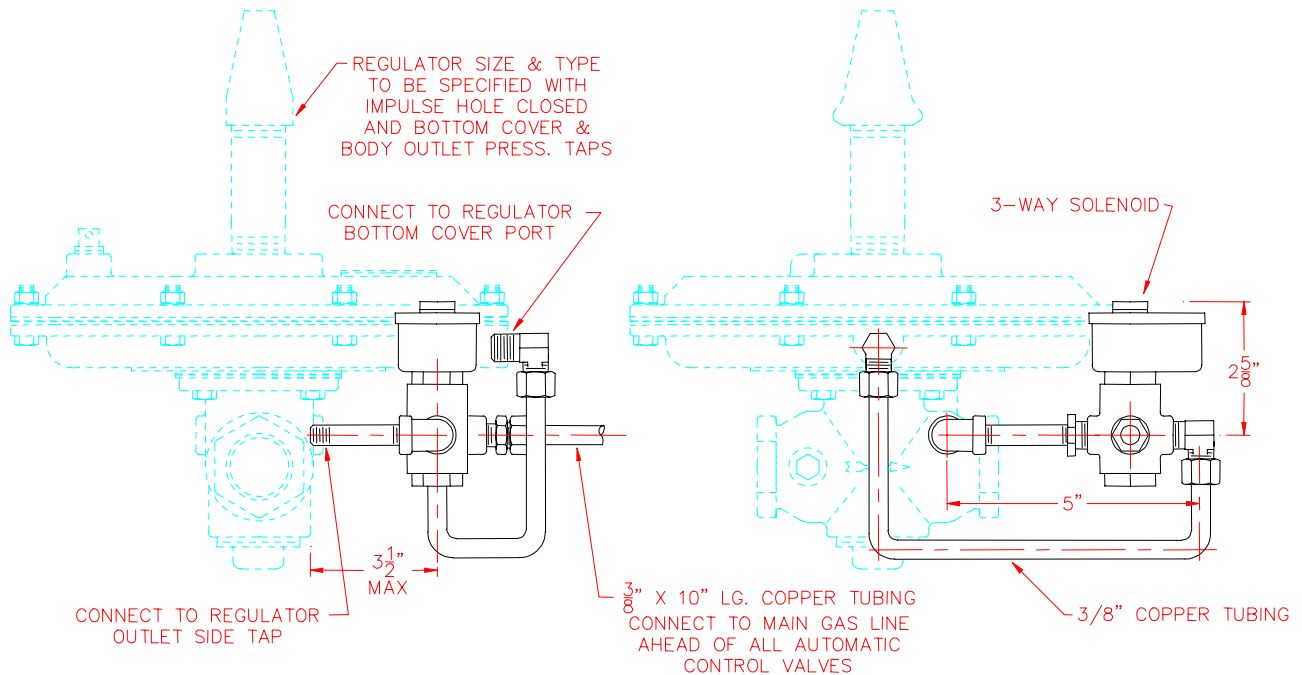


Figure 1

DISCLAIMER

The Gas-Lok Regulator is NOT an approved safety shut-off valve and should not be used to shut-off the main gas flow in the event of a flame failure. In this case, use a Manual Reset Valve (Refer to Bulletin 1101) to shut-off the main gas flow.

CAUTION: Operation of combustion equipment can be hazardous resulting in bodily injury or equipment damage. Each burner should be supervised by a combustion safeguard and only qualified personnel should install, make system adjustments and perform any required service.



PYRONICS
A Selas Heat Technology Brand

11012 Aurora Hudson Road
Streetsboro, OH 44241
Email: sales@selas.com

Toll Free: 800-883-9218
Main: 216-662-8800
Fax: 216-663-8954

NOTICE: PYRONICS practices a policy of continuous improvement in the design of its products. It reserves the right to change the specifications at any time without prior notice.