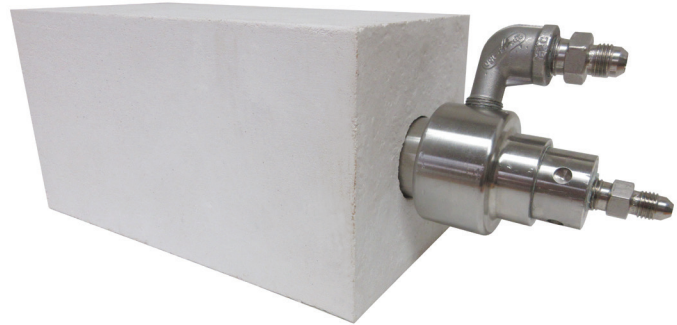


Capacities:
30,000 to 250,000 Btu/Hr



S-GLASS Oxy Forehearth

The S-Glass Oxy Forehearth is a nozzle-mix burner, intended to be used in a forehearth application. These burners provide temperature uniformity throughout the glass and come ready to fire at 30,000 to 250,000 Btu/hr. Available in five models, the Oxy Forehearth has a high 10 to 1 turndown ratio, allowing the burner to have a simplistic design and layout.

How It Works

The design of the Oxy Forehearth burner provides temperature uniformity to the glass and incorporates a 300-series stainless steel gas tip and oxygen nozzle. These burners produce an oxy/gas flame, which lowers fuel use and

improves heat transfer to the glass, unlike air/gas combustion systems. The Oxy Forehearth burners can fit and function in many types of block styles. Consult Selas Heat Technology for more information.

Benefits

- High 10 to 1 turndown allows for simplicity in design and burner layout
- Cooler tip and block temperature for safe maintenance-free operation
- 60% reduction in fuel consumption compared to air/gas firing
- Improved nozzle design for safe operation

Model	Capacity	Gas SCFH
0030	30,000 Btu/hr	3-30
0050	50,000 Btu/hr	5-50
0100	100,000 Btu/hr	25-100
0150	150,000 Btu/hr	30-150
0250	250,000 Btu/hr	35-250



SCAN FOR MORE INFORMATION



Diverse Combustion Technologies. One Reliable Source.