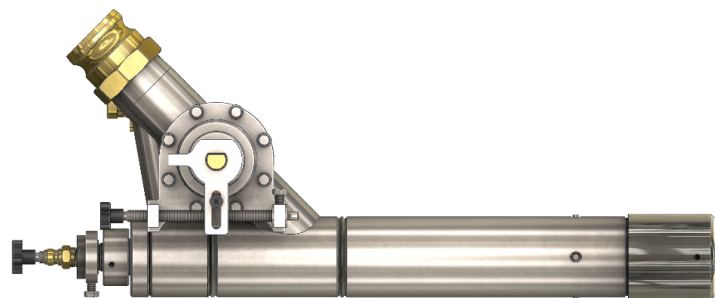


Selas Adjustable Gas Burner (SAGB)

SAGB Model - 3.0

Selas Adjustable Gas Burner (SAGB) is designed for regenerative glass furnaces. The burner has adjustable mechanisms for flame length and energy release position.

Size 3.0 with a heat input range 5.0 to 17.0 mm BTU, 1.5-5.0 MW, is suitable for end-port and cross fired furnaces, side of port or under port firing positions.



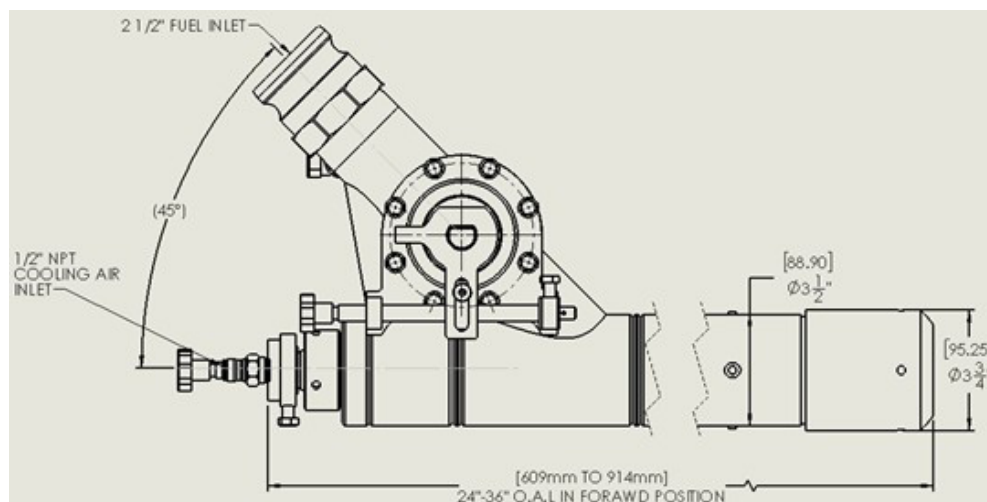
SAGB Burner Specifications

Burner Capacity MW mm BTU		Gas Flow Nm ³ /hr SCFH		Gas Pressure @ Burner mBar PSIG		Off-Side Cooling Air NCMH SCFH		Off-Side Cooling Air mBar PSIG	
Min.	Max.	Min.	Max.	Min.	Max.	Min.	Max.	Min.	Max.
1.5	5.0	135	455	20	500	10	20	138	413
5.0	17.0	5,000	17,000	0.3	7.2	370	740	2	6

NOTES:

1. Above data is based on net heat value (LHV)
2. Normal condition: 1 atmosphere, 0°C.
3. Actual data varies by each application condition.
4. Available velocity: 175 FPS, 250 FPS & 400 FPS baseline velocity.

Typical Burner Length and Dimensions



The Heat Technology Company™

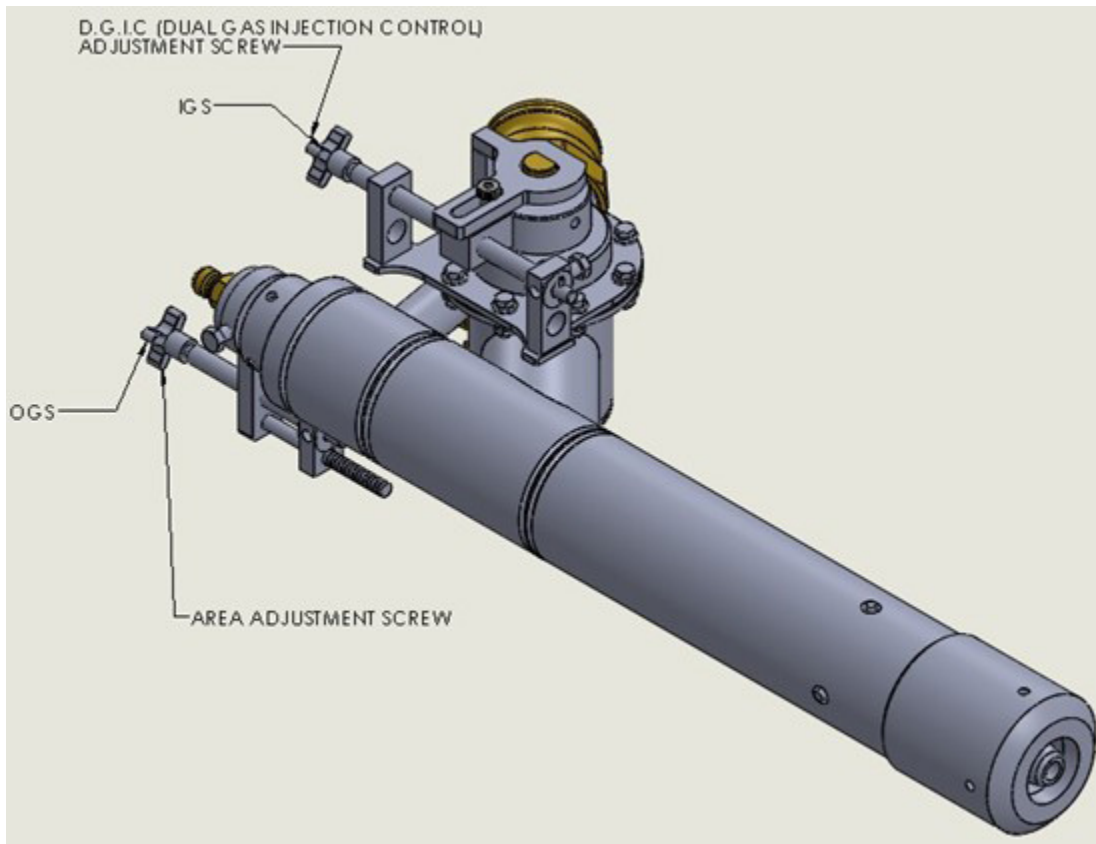
Burner Settings

Shown below, there are two adjustment mechanisms. One is for flame length, shown as OGS (Outer Gas Stream). To make the flame longer, rotate OGS clockwise. To make the flame shorter, rotate OGS counterclockwise. On the adjustment mechanism, there is a scale with engraved lines, the tip position is noted as 0 – 16 rings. Position 0 being fully CCW, shortest flame, and position 16 being fully CW, longest flame.

The other adjustment mechanism, is to change the energy release position, shown as IGS (Inner Gas Stream). There is an angle scale marked on the IGS disk, 0-100. When the IGS is rotated, the amount of gas flow into the OGS Tube changes in relation to the ISG Tube.

Rotating the IGS Adjustment knob counterclockwise increases the gas flow to the IGS while rotating it clockwise decreases flow to the IGS.

- Increasing gas flow through the IGS delays mixing, moving heat release away from firing port.
- Decreasing gas flow through the IGS speeds mixing, moving heat release closer to the firing port.

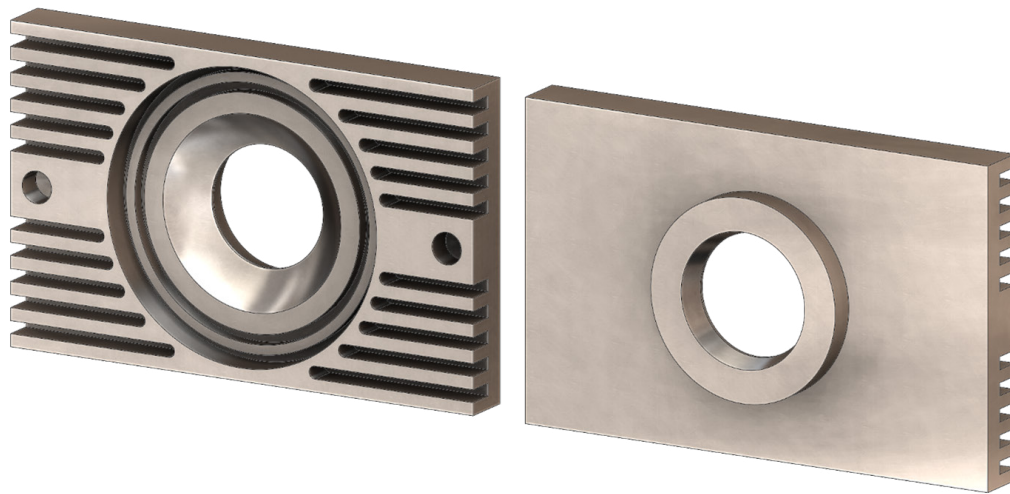


The Heat Technology Company™

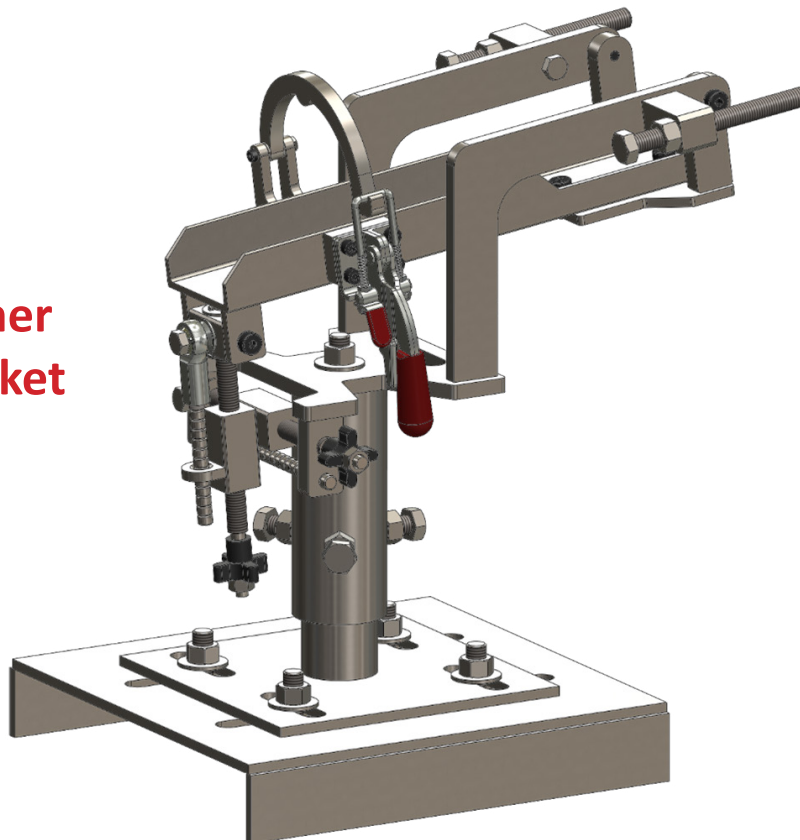
Installation Accessories

- Seal Plate: to be installed between burner outer nozzle and burner block.
- Burner Bracket: Holds the burner, adjusts mounting position; allows vertical & horizontal firing adjustments.
- For detailed burner size and installation requirements, please contact Selas.

**Seal
Plate**



**Burner
Bracket**

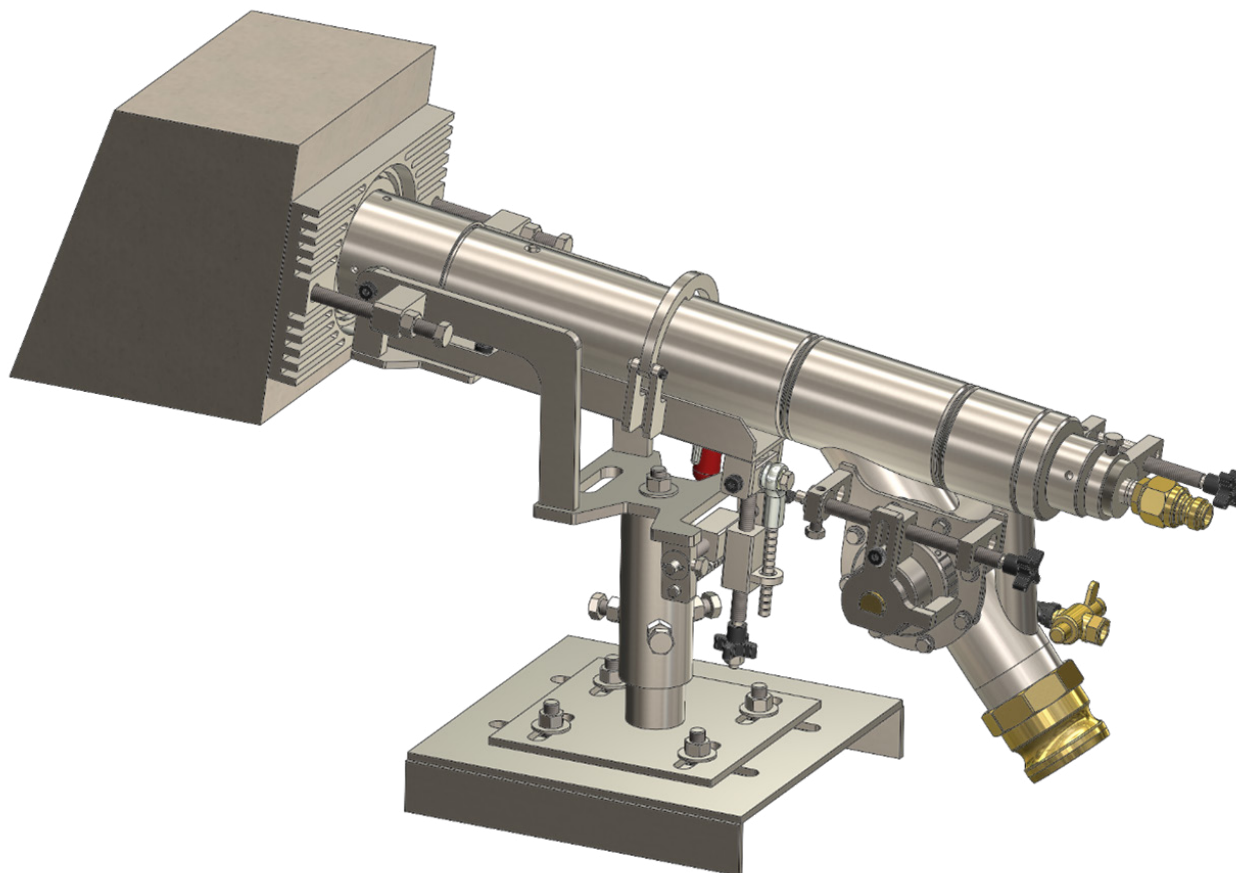


The Heat Technology Company™

Selas Adjustable Gas Burner (SAGB)

- Burner Bracket Layout (BBL): The burner is shown below in the bracket with the seal plate between the burner nozzle and burner block. Customer order detail can show actual furnace detail for installation reference.

Burner Bracket Layout



11012 Aurora Hudson Rd • Streetsboro, OH 44241

1-800-523-6500 • sales@selas.com

www.selas.com



The Heat Technology Company™