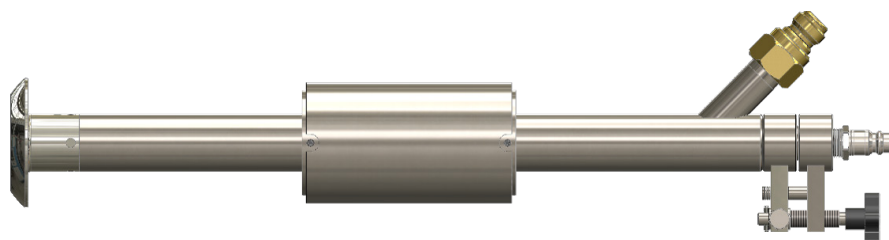


Capacity Range:
1.8 - 18 MM BTU

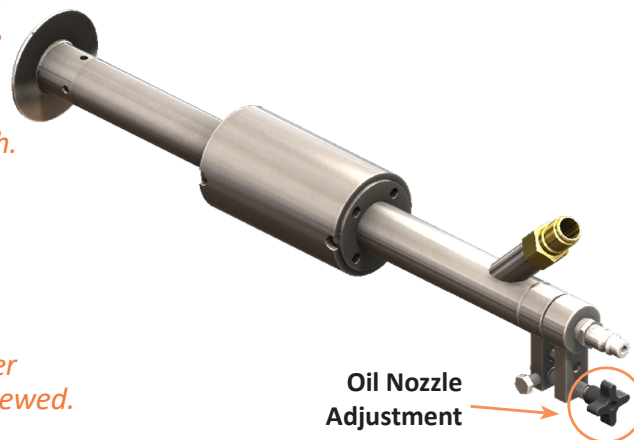


SAOL Burner Selas Adjustable Oil Lance

The Selas Adjustable Oil Lance (SAOL) is designed for regenerative glass furnaces, with a mechanism for adjusting the position of the oil nozzle in relation to the atomizing air nozzle. This adjustment mechanism allows the flame length and geometry to be tuned to the furnace geometry for optimized heat transfer to the glass bath.

Two body sleeve sizes are available to provide flexibility for under port and side of port firing, as well as end port and cross-fired furnaces. Atomizing air nozzles, oil nozzles, and oil swirlers are designed to fit furnace energy requirements for atomizing oil.

The SAOL is designed for integration into a furnace port and burner block; details can be supplied by Selas or from customer to be reviewed.



Burner Capacity

	SAOL 2.5		SAOL 2.5		SAOL 2.5			
			SAOL 3.0		SAOL 3.0		SAOL 3.0	
	Min.	Max.	Min.	Max.	Min.	Max.	Min.	Max.
mm BTU	1.8	9.0	2.4	12.0	3.0	15.0	3.5	18.0
MW	0.53	2.64	0.70	3.52	0.88	4.40	1.03	5.27
GPH	13	65	17	87	22	109	25	130
LPH	49.4	246.8	65.8	329.1	82.3	411.4	96.0	493.7

NOTES:

1. Assume 138,000 BTU/Gal.
2. Burner sizes can overlap, consult Selas for details.



11012 Aurora Hudson Rd • Streetsboro, OH 44241
1-800-523-6500 • sales@selas.com
www.selas.com