

Selas SR Series Pressure Reducing Regulator

How It Works

The SR Series Reducing Regulators operate with inlet pressures in the range of 1 psig to 25 psig and delivery pressures from 2" w.c. to 5 psig. The upper diaphragm is normally open to atmosphere while the lower diaphragm chamber is subject to outlet pressure.

A spring-loaded diaphragm keeps the valve open until outlet pressure balances the spring force, automatically adjusting to maintain constant delivery pressure. Changes in flow create slight pressure shifts, prompting the diaphragm to reposition and restore balance.

A patented compensator responds to flow velocity and, combined with outlet pressure, fine-tunes the valve to ensure consistent pressure.

Features

- Precision outlet pressure control
- Wide flow range
- Soft valve seating
- Balance valve design - holds outlet pressure constant with varying inlet pressures
- Inlet pressures to 25 psig
- Synthetic, reinforced diaphragms - good for most fuel gases
- Springs color coded for identification

SR Capacity Chart

Model Number	Pipe Size	SCFH Gas Flow @ 14.0" W.C Pressure Drop			
		MFD 0.4 Sp. Gr.	NAT. 0.6 Sp. Gr.	AIR 1.0 Sp. Gr.	L.P. 1.5 Sp. Gr.
SR6-	3/4"	1,230	1,000	780	630
SR8-	1"	2,500	2,000	1,500	1,200
SR12-	1-1/2"	4,900	4,000	3,100	2,500
SR16-	2"	9,400	7,700	6,000	4,900
SR20-	2-1/2"	12,300	10,000	7,800	6,300
SR24-	3"	21,000	17,000	13,000	11,000

Maximum capacity must be limited to less than 200% of rating above.



The Heat Technology Company™

Spring Ranges – SR and SR-300

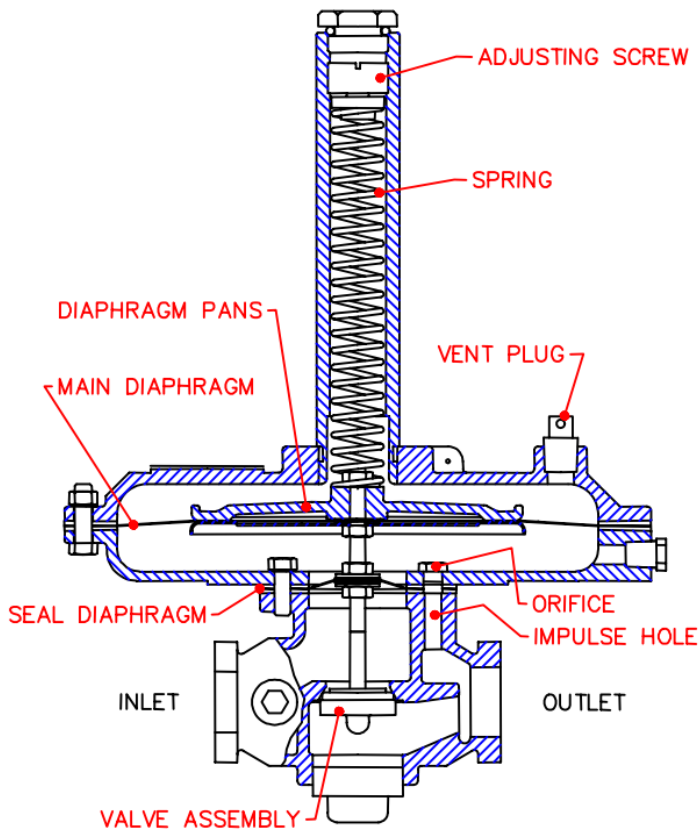
Spring Number	Spring Color	Outlet Pressure Range	
		Minimum	Maximum
4	Red	2" w.c. to 8" w.c.	
16	Orange	7" w.c. to 30" w.c.	
48	White	12 osi to 48 osi	
80	Blue	30 osi to 80 osi	

Select spring for each regulator based on required system delivery pressure.
Minimum pressure drop across regulator 14" w.c. (1/2 psig).

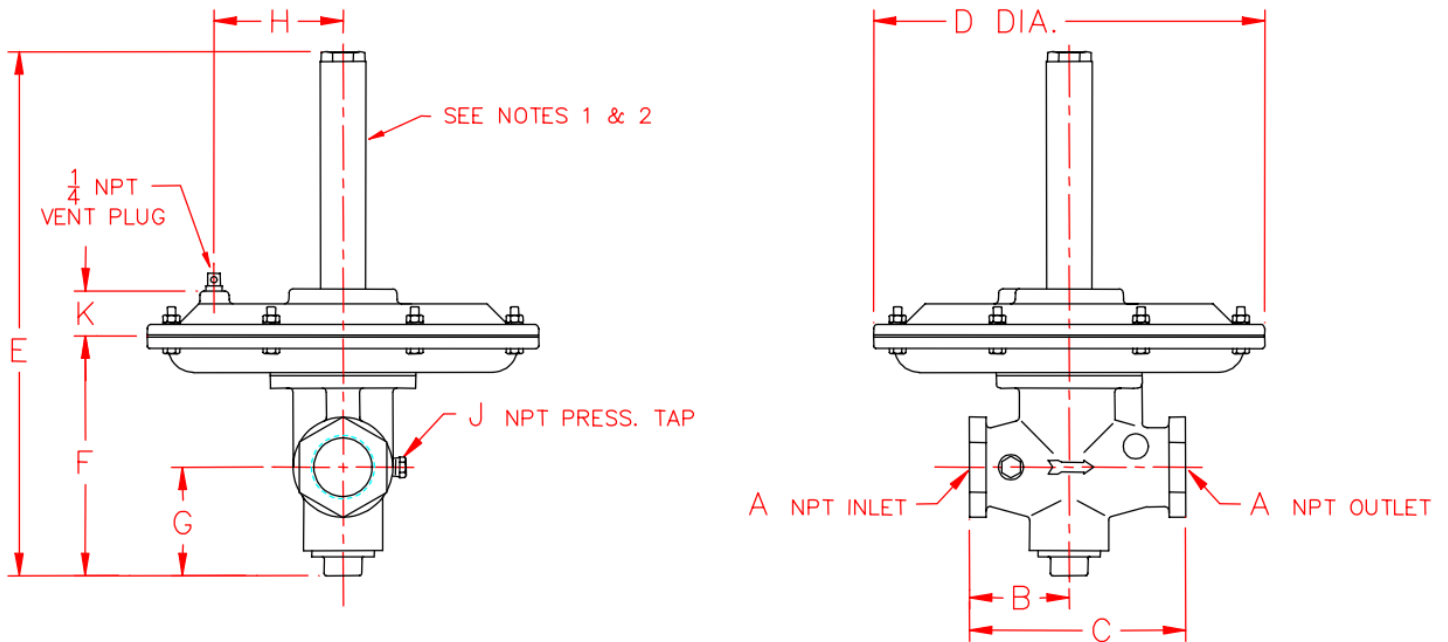
Spring Availability by Model

	SR-6-	SR-8-	SR-12-	SR-16-	SR-20-	SR-24-	SR-12-PC-	SR-20-PC-	SR-24-PC-
4 osi Spring	X	X	X	X	X	X			
16 osi Spring	X	X	X	X	X	X			
48 osi Spring	X	X	X	X				X	X
80 osi Spring	X	X					X	X	X

SR Regulator Drawing



Dimensions: 3/4" – 3" SR and SR - 300



Model Number	A	B	C	D	E	F	G	H	J	K	Weight	
											Lbs.	Kgs.
SR-6-4, 16 & 48	3/4"	2-1/2"	5"	8-1/4"	13-1/4"	4-7/8"	2"	-	1/8"	-	8.0	3.63
SR-6-80	3/4"	2-1/2"	5"	8-1/4"	18-1/8"	4-7/8"	2"	-	1/8"	-	9.0	4.10
SR-8-4, 16 & 48	1"	2-3/8"	4-3/4"	9-3/4"	13-1/4"	4-3/4"	2"	3-3/8"	1/8"	1-1/4"	9.9	4.50
SR-8-80	1"	2-3/8"	4-3/4"	9-3/4"	16-1/4"	4-3/4"	2"	3-3/8"	1/8"	1-1/4"	11.2	5.10
SR-12-4 & 16	1-1/2"	3"	6-1/2"	11-3/4"	15-3/4"	7-1/4"	3-1/4"	3-7/8"	1/4"	1-3/8"	16.1	7.35
SR-12-48	1-1/2"	3"	6-1/2"	9-3/4"	15-1/2"	7"	3-1/4"	3-3/8"	1/4"	1-1/4"	14.1	6.40
SR-16-4, 16 & 48	2"	3-1/2"	7-1/2"	9-3/4"	16-3/8"	8"	3-7/8"	3-3/8"	1/4"	1-1/4"	18.0	8.18
SR-20-4 & 16	2-1/2"	4"	8-3/4"	14"	20-7/8"	8-3/4"	3-5/8"	3-5/8"	1/4"	1-7/8"	52.8	24.00
SR-24-4 & 16	3"	5-3/4"	11-1/2"	14"	22-5/8"	10-5/8"	4-5/8"	3-5/8"	1/4"	1-7/8"	63.8	29.00

NOTES:

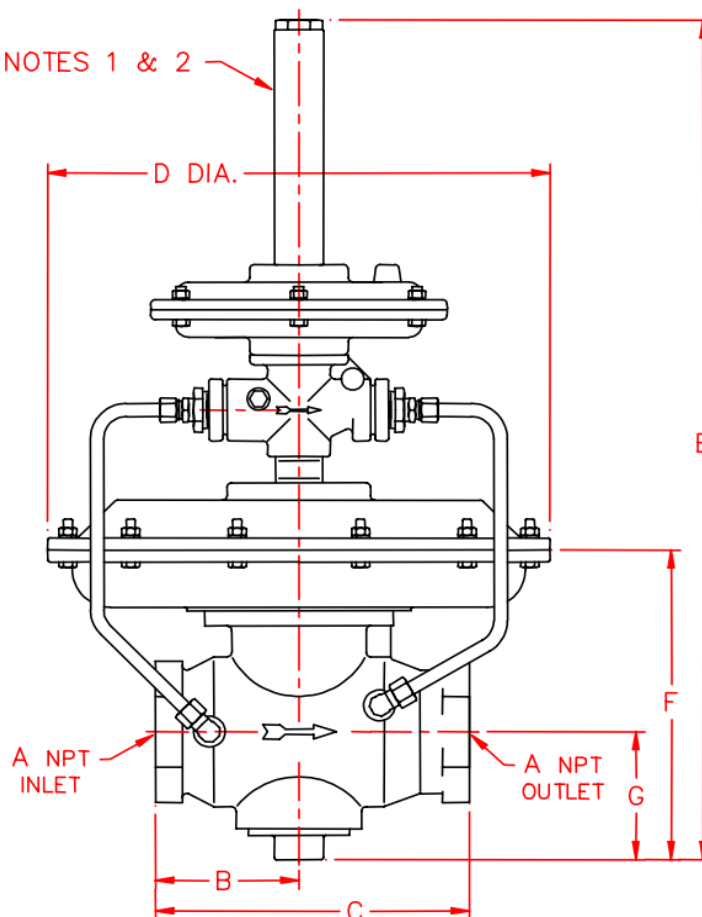
1. Spring housing must be perpendicular to pipe run in an upright position.
2. Gas pipe run must be horizontal and level.
3. All dimensions are in inches.



The Heat Technology Company™

Selas SR Series Pressure Reducing Regulator

Dimensions: 1-1/2" – 3" SR-PC and SR-PC-300



Model Number	A	B	C	D	E	F	G	Weight	
								Lbs.	Kgs.
SR-12-PC-80	1-1/2"	3"	6-1/2"	11-3/4"	26-7/8"	7-1/4"	3-1/4"	24.4	11.1
SR-20-PC-48	2-1/2"	4"	8-3/4"	14"	24"	8-3/4"	3-5/8"	55.0	25.0
SR-20-PC-80	2-1/2"	4"	8-3/4"	14"	28-7/8"	8-3/4"	3-5/8"	57.2	26.0
SR-24-PC-48	3"	5-3/4"	11-1/2"	14"	25-7/8"	10-5/8"	4-5/8"	72.6	33.0
SR-24-PC-80	3"	5-3/4"	11-1/2"	14"	20-3/4"	10-5/8"	4-5/8"	74.4	33.8

NOTES:

1. Spring housing must be perpendicular to pipe run in an upright position.
2. Gas pipe run must be horizontal and level.
3. All dimensions are in inches.

11012 Aurora Hudson Rd • Streetsboro, OH 44241

1-800-523-6500 • sales@selas.com

www.selas.com



The Heat Technology Company™